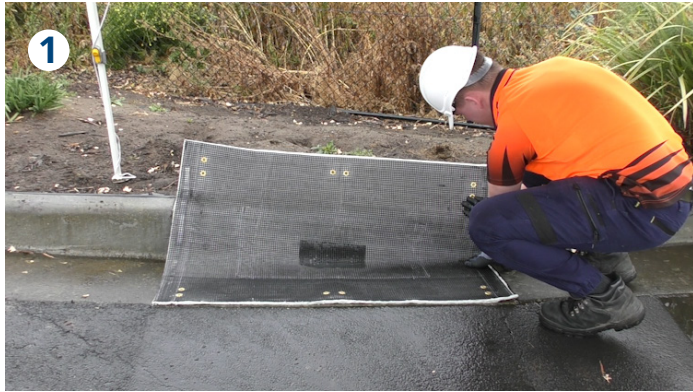




**GUARDDOG**  
DRAIN FILTER

INSTALLATION GUIDE

**GuardDog Side Entry Drain Filter**



Place the GuardDog over the drain. Side entry GuardDogs feature aluminium strips that bend to suit all gutter types.



Slightly overbending the aluminium strip angle can help to ensure a tighter gutter fit.



Using the GuardDog eyelets:  
a) Drill and secure with concrete screws **OR**  
b) use plastic or metal ties to secure to the drain grate.



If easy drain access is required, a sandbag can be used to secure the top edge of the GuardDog.



The mesh centre can also be cut out to prevent flooding in heavy rainfall.



a) Use a brush or broom to sweep away leaves and debris.  
b) Can also be hosed from behind to remove silt build up.

TO ORDER

Code	Description	Size	Order Qty
SPL090A	GuardDog Side-Entry Drain Filter	1220 x 810mm	Each
SPL098A	GuardDog Side-Entry Drain Filter	1500 x 810mm	Each

Flat drain and custom sizes available, contact your Stratex representative.